

# E8 3/8" Plastic Pumps

## Specifications and Performance

### SPECIFICATIONS

E8

**FLOW RATE** adjustable to.....0-6.8 gpm (26 lpm)  
**PORT SIZE**

Inlet and Outlet ..... 3/8" NPTF (BSP)

**AIR INLET** ..... 0.25" NPT

**AIR EXHAUST** ..... 0.25" NPT

**SUCTION LIFT** (dry) ..... 11' (3.4 m)

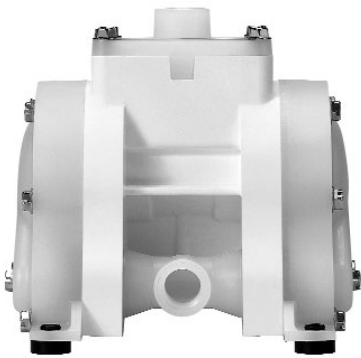
Teflon® (dry) ..... 11' (3.4 m)

**MAX. PARTICLE SIZE** (Dia.) ..... 0.10" (2.5 mm)

**SHIPPING WEIGHT**

Polypropylene ..... 3.0 lbs (1.4 kg)

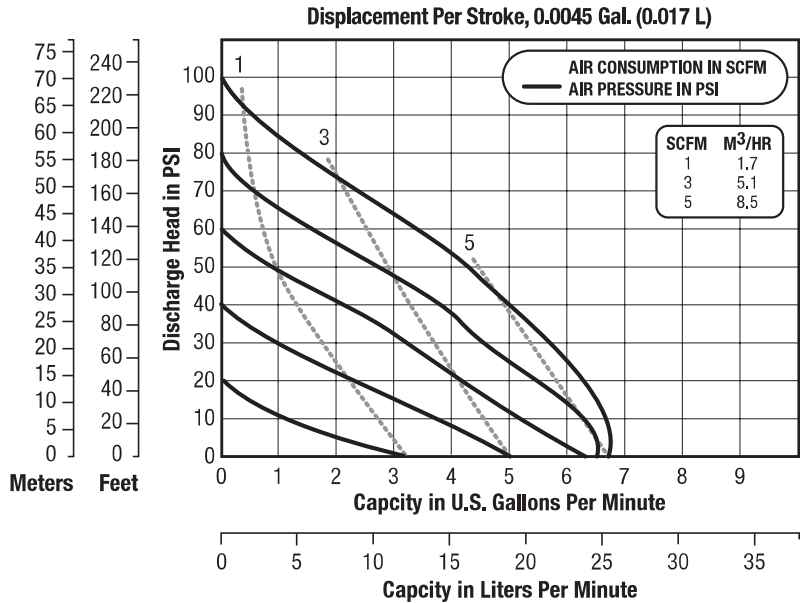
Kynar ..... 3.0 lbs (1.4 kg)



### PERFORMANCE

Determined by actual flow meter tests.

E8



**CAUTION:** Do not exceed 100 psig (6.8 bars) air supply or liquid pressure.

### DIMENSIONS

Consult factory for certified drawings.

E8

