



W555 Triplex Pump

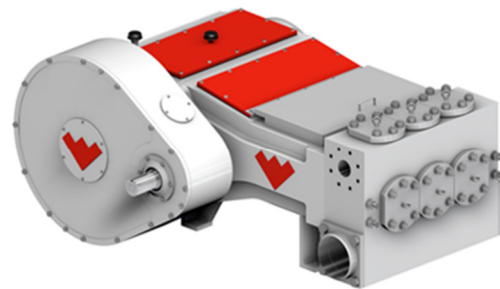
Pump Specifications

Rated (HP, kW)	555	410
Stroke length (in., mm)	7.50	191
M aximum discharge pressure (psi, bar)		
W555M	6,250	431
W555L	2,290	158
Rated rod load (lb, kg)	32,515	14,749
API-674 speed (rpm)	225	
M aximum speed (rpm)	275	
M inimum speed (rpm)	50	
Crankshaft dimensions (in., mm)		
Diameter (Drive)	5.500	139
Diameter (Accessory)	4.750	121
Length (Drive)	13.70	348
Length (Accessory)	3.13	79
Keyway, width × depth (in., mm)	1.25 × .62	32 × 16
Oil capacity (gal, l)		
Pump	50.0	190
Reducer (varies with ratio)	5.5	21
Estimated weight (lb, kg)		
Pump		
W555M	12,700	5,760
W555L	12,400	5,625
Reducer	3,150	1,429
M echanical efficiency	90%	

Flange Connections

Pump Model	Discharge Connection Sizes (in., mm)	Suction Connection Sizes (in., mm)
W555M	3 (76.2) CL2500 FF	6 (152.4) CL150 FF
W555L	4 (101.6) CL900 FF	10 (254) NSD CL150 FF *

* One blind and one weld neck flange provided



Standard Equipment

- Forged duplex stainless steel or forged carbon steel fluid cylinders
- Duplex stainless steel stuffing boxes
- Wing guided valves
Metal to Metal
Abrasion Resistant
- Multiple plunger packing arrangements

Optional Accessories

- Weatherford bolt-on gear reducers (LH or RH)
Ratios 4.14:1
4.78:1
- Complete motor or engine driven pump packages
- Packing lubricators
- Custom, plunger, packing, and valve arrangements

Technical Support

pumps@weatherford.com

713-836-4000



W555 Triplex Pump

Performance Ratings

Model (standard)	Plunger Diameter (in.)	Gallons Per Revolution	Maximum Pressure PSI	50 RPM		100 RPM		200 RPM		225 RPM *		250 RPM		275 RPM	
				GPM	BPD	GPM	BPD	GPM	BPD	GPM	BPD	GPM	BPD	GPM	BPD
W555M	2.500	0.4781	6,250	23.9	820	47.8	1639	95.6	3279	107.6	3688	119.5	4098	131.5	4508
	2.750	0.5785	5,470	28.9	992	57.9	1984	115.7	3967	130.2	4463	144.6	4959	159.1	5455
	3.000	0.6885	4,600	40.4	1180	68.8	2361	137.7	4721	154.9	5311	172.1	5901	189.3	6492
	3.500	0.9371	3,380	46.9	1606	93.7	3213	187.4	6426	210.9	7229	234.3	8032	257.7	8836
	3.750	1.0758	2,940	53.8	1844	107.6	3688	215.2	7377	242.1	8299	268.9	9221	295.8	10143
	4.000	1.2240	2,590	61.2	2098	122.4	4197	244.8	8393	275.4	9442	306.0	10491	336.6	11541
W555L	4.250	1.3818	2,290	69.1	2369	138.2	4738	276.4	9475	310.9	10659	345.4	11844	380.0	13028
	4.500	1.5491	2,040	77.5	2656	154.9	5311	309.8	10623	348.6	11950	387.3	13278	426.0	14606
	4.750	1.7260	1,830	86.3	2959	172.6	5918	345.2	11836	388.4	13315	431.5	14795	474.7	16274
	5.000	1.9125	1,660	95.6	3279	191.2	6557	382.5	13114	430.3	14754	478.1	16393	525.9	18032
	5.500	2.3141	1,370	115.7	3967	231.4	7934	462.8	15868	520.7	17852	578.5	19835	636.4	21819
	6.000	2.7540	1,150	137.7	4721	275.4	9442	550.8	18885	619.6	21245	688.5	23606	757.3	25966

Model (standard)	Plunger Diameter (in.)	Liters Per Revolution	Maximum Pressure BAR	50 RPM		100 RPM		200 RPM		225 RPM *		250 RPM		275 RPM	
				LPM	M ³ /hr	LPM	M ³ /hr	LPM	M ³ /hr	LPM	M ³ /hr	LPM	M ³ /hr	LPM	M ³ /hr
W555M	2.500	1.8099	431	90	5	181	11	362	22	407	24	452	27	498	30
	2.750	2.1900	377	109	7	219	13	438	26	493	30	547	33	602	36
	3.000	2.6062	317	130	8	261	16	521	31	586	35	652	39	717	43
	3.500	3.5474	233	177	11	355	21	709	43	798	48	887	53	976	59
	3.750	4.0723	203	204	12	407	24	814	49	916	55	1018	61	1120	67
	4.000	4.6333	179	232	14	463	28	927	56	1042	63	1158	70	1274	77
W555L	4.250	5.2306	158	262	16	523	31	1046	63	1177	71	1308	79	1438	86
	4.500	5.8640	141	293	18	586	35	1173	70	1319	79	1466	88	1613	97
	4.750	6.5337	126	327	20	653	39	1307	78	1470	88	1633	98	1797	108
	5.000	7.2396	114	362	22	724	43	1448	87	1629	98	1810	109	1991	120
	5.500	8.7599	94	438	26	876	53	1752	105	1971	118	2190	132	2409	145
	6.000	10.4250	79	521	31	1042	63	2085	125	2346	141	2606	157	2867	172

*API Speed

General Notes

1. Capacities shown are based on 100 percent volumetric efficiency. Actual capacities are lower, based on discharge pressure and fluid compressibility
2. API-674 and NACE-compliant designs are available; consult Weatherford for details and exceptions to these standards.
3. Standard plunger sizes are shown; however, other sizes are available upon request.
4. A 4-GPM filtered power end lube system is required. The internal plumbing is included with the pump. Weatherford offers two optional systems, external electric driven and internal change driven.