



W950 Quintuplex Pump

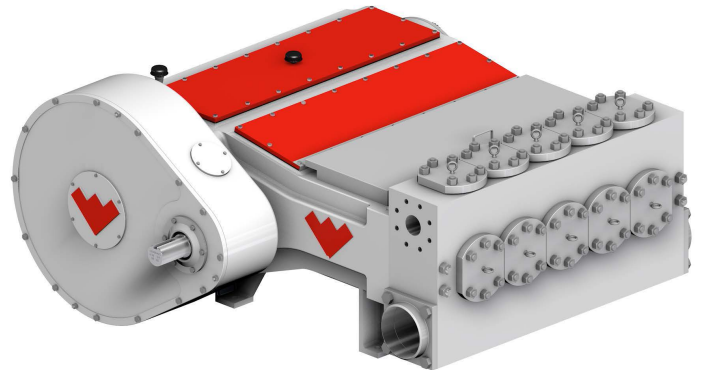
Pump Specifications

| | | |
|---------------------------------------|------------|---------|
| Rated (HP, kW) | 950 | 708 |
| Stroke length (in., mm) | 7.50 | 191 |
| Maximum discharge pressure (psi, bar) | | |
| W950M | 6,250 | 431 |
| W950L | 2,250 | 158 |
| Rated rod load (lb, kg) | 32,515 | 14,749 |
| API-674 speed (rpm) | 225 | |
| Maximum speed (rpm) | 275 | |
| Minimum speed (rpm) | 50 | |
| Crankshaft dimensions (in., mm) | | |
| Diameter (Drive) | 5.500 | 139 |
| Diameter (Accessory) | 4.750 | 121 |
| Length (Drive) | 13.70 | 348 |
| Length (Accessory) | 3.13 | 79 |
| Keyway, width × depth (in., mm) | 1.25 × .62 | 32 × 16 |
| Oil capacity (gal, l) | | |
| Pump | 80.0 | 303 |
| Reducer (varies with ratio) | 5.5 | 21 |
| Estimated weight (lb, kg) | | |
| Pump | | |
| W950M | 17,900 | 8,119 |
| W950L | 17,500 | 7,938 |
| Reducer | 3,150 | 1,429 |
| Mechanical Efficiency | 90% | |

Flange Connections

| Pump Model | Discharge Connection Sizes (in., mm) | Suction Connection Sizes (in., mm) |
|------------|--------------------------------------|------------------------------------|
| W950M | 4(101.6) CL2500 FF | 8 (203.2) CL150 FF |
| W950L | 4(101.6) CL900 FF | 10 (254) NSD CL150 FF * |

* One blind and one weld neck flange provided



Standard Equipment

- Forged duplex stainless steel or forged alloy steel fluid cylinders
- Duplex stainless steel stuffing boxes
- Wing guided valves
Metal to Metal
Abrasion Resistant
- Multiple plunger packing arrangements

Optional Accessories

- Weatherford bolt-on gear reducers (LH or RH)
Ratios 4.14:1
4.78:1
- Complete motor or engine driven pump packages
- Packing lubricator kits
- Custom, plunger, packing, and valve arrangements

Technical Support

pumps@weatherford.com

713-836-4000



W950 Triplex Pump

Performance Ratings

| Model (standard) | Plunger Diameter (in.) | Gallons Per Revolution | Maximum Pressure PSI | 50 RPM | | 100 RPM | | 200 RPM | | 225 RPM * | | 250 RPM | | 275 RPM | |
|------------------|------------------------|------------------------|----------------------|--------|------|---------|-------|---------|-------|-----------|-------|---------|-------|---------|-------|
| | | | | GPM | BPD | GPM | BPD | GPM | BPD | GPM | BPD | GPM | BPD | GPM | BPD |
| W950M | 2.500 | 0.7969 | 6,250 | 39.8 | 1366 | 79.7 | 2732 | 159.4 | 5464 | 179.3 | 6147 | 199.2 | 6830 | 219.1 | 7513 |
| | 2.750 | 0.9642 | 5,470 | 48.2 | 1653 | 96.4 | 3306 | 192.8 | 6612 | 216.9 | 7438 | 241.1 | 8265 | 265.2 | 9091 |
| | 3.000 | 1.1475 | 4,600 | 57.4 | 1967 | 114.7 | 3934 | 229.5 | 7869 | 258.2 | 8852 | 286.9 | 9836 | 315.6 | 10819 |
| | 3.500 | 1.5619 | 3,380 | 78.1 | 2677 | 156.2 | 5355 | 312.4 | 10710 | 351.4 | 12049 | 390.5 | 13387 | 429.5 | 14726 |
| | 3.750 | 1.7930 | 2,940 | 89.6 | 3074 | 179.3 | 6147 | 358.6 | 12295 | 403.4 | 13831 | 448.2 | 15368 | 493.1 | 16905 |
| | 4.000 | 2.0400 | 2,590 | 102.0 | 3497 | 204.0 | 6994 | 408.0 | 13989 | 459.0 | 15737 | 510.0 | 17486 | 561.0 | 19234 |
| W950L | 4.250 | 2.3030 | 2,250 | 115.1 | 3948 | 230.7 | 7896 | 460.6 | 15792 | 518.2 | 17766 | 575.7 | 19740 | 633.3 | 21714 |
| | 4.500 | 2.5819 | 2,040 | 129.1 | 4426 | 258.2 | 8852 | 516.4 | 17704 | 580.9 | 19917 | 645.5 | 22130 | 710.0 | 24343 |
| | 4.750 | 2.8767 | 1,830 | 143.8 | 4932 | 287.7 | 9863 | 575.3 | 19726 | 647.3 | 22192 | 719.2 | 24658 | 791.1 | 27123 |
| | 5.000 | 3.1875 | 1,660 | 159.4 | 5464 | 318.7 | 10929 | 637.5 | 21857 | 717.2 | 24589 | 796.9 | 27321 | 876.6 | 30054 |
| | 5.500 | 3.8569 | 1,370 | 192.8 | 6612 | 385.7 | 13224 | 771.4 | 26447 | 867.8 | 29753 | 964.2 | 33059 | 1060.6 | 36365 |
| | 6.000 | 4.5900 | 1,150 | 229.5 | 7869 | 459.0 | 15737 | 918.0 | 31474 | 1032.7 | 35408 | 1147.5 | 39343 | 1262.2 | 43277 |

| Model (standard) | Plunger Diameter (in.) | Liters Per Revolution | Maximum Pressure BAR | 50 RPM | | 100 RPM | | 200 RPM | | 225 RPM * | | 250 RPM | | 275 RPM | |
|------------------|------------------------|-----------------------|----------------------|--------|--------------------|---------|--------------------|---------|--------------------|-----------|--------------------|---------|--------------------|---------|--------------------|
| | | | | LPM | M ³ /hr | LPM | M ³ /hr | LPM | M ³ /hr | LPM | M ³ /hr | LPM | M ³ /hr | LPM | M ³ /hr |
| W950M | 2.500 | 3.0165 | 431 | 151 | 9 | 302 | 18 | 603 | 36 | 679 | 41 | 754 | 45 | 830 | 50 |
| | 2.750 | 3.6499 | 377 | 182 | 11 | 365 | 22 | 730 | 44 | 821 | 49 | 912 | 55 | 1004 | 60 |
| | 3.000 | 4.3437 | 317 | 217 | 13 | 434 | 26 | 869 | 52 | 977 | 59 | 1086 | 65 | 1195 | 72 |
| | 3.500 | 5.9123 | 233 | 296 | 18 | 591 | 36 | 1182 | 71 | 1330 | 80 | 1478 | 89 | 1626 | 98 |
| | 3.750 | 6.7871 | 203 | 339 | 20 | 679 | 41 | 1357 | 82 | 1527 | 92 | 1697 | 102 | 1866 | 112 |
| | 4.000 | 7.7222 | 179 | 386 | 23 | 772 | 46 | 1544 | 93 | 1737 | 104 | 1931 | 116 | 2124 | 128 |
| W950L | 4.250 | 8.7176 | 155 | 436 | 26 | 872 | 52 | 1744 | 105 | 1961 | 118 | 2179 | 131 | 2397 | 144 |
| | 4.500 | 9.7734 | 141 | 489 | 29 | 977 | 59 | 1955 | 117 | 2199 | 132 | 2443 | 147 | 2688 | 161 |
| | 4.750 | 10.8895 | 126 | 544 | 33 | 1089 | 65 | 2178 | 131 | 2450 | 147 | 2722 | 164 | 2995 | 180 |
| | 5.000 | 12.0659 | 114 | 603 | 36 | 1207 | 72 | 2413 | 145 | 2715 | 163 | 3016 | 181 | 3318 | 199 |
| | 5.500 | 14.5998 | 94 | 730 | 44 | 1460 | 88 | 2920 | 175 | 3285 | 197 | 3650 | 219 | 4015 | 241 |
| | 6.000 | 17.3749 | 79 | 869 | 52 | 1737 | 104 | 3475 | 209 | 3909 | 235 | 4344 | 261 | 4778 | 287 |

*API Speed

General Notes

1. Capacities shown are based on 100 percent volumetric efficiency. Actual capacities are lower, based on discharge pressure and fluid compressibility
2. API-674 and NACE-compliant designs are available; consult Weatherford for details and exceptions to these standards.
3. Standard plunger sizes are shown; however, other sizes are available upon request.
4. A 4-GPM filtered power end lube system is required. The internal plumbing is included with the pump. Weatherford offers two optional systems, external electric driven and internal change driven.