



/ Pumps Manufacturing Company





Reliability  
Efficiency  
Performance

Since 1952







  
POMPE 3P®

  
PERA-PRINZ®

Pompe 3P® and Pera-Prinz® are trademarks of 3P Prinz® srl





## / Company Profile

The company is highly specialized in engineering products and innovative technology, serving the demands of customers worldwide.

Thanks to its products range, the company is now able to provide complete pumps manufactured on customer's specification for the transport of liquids in key industrial sectors.

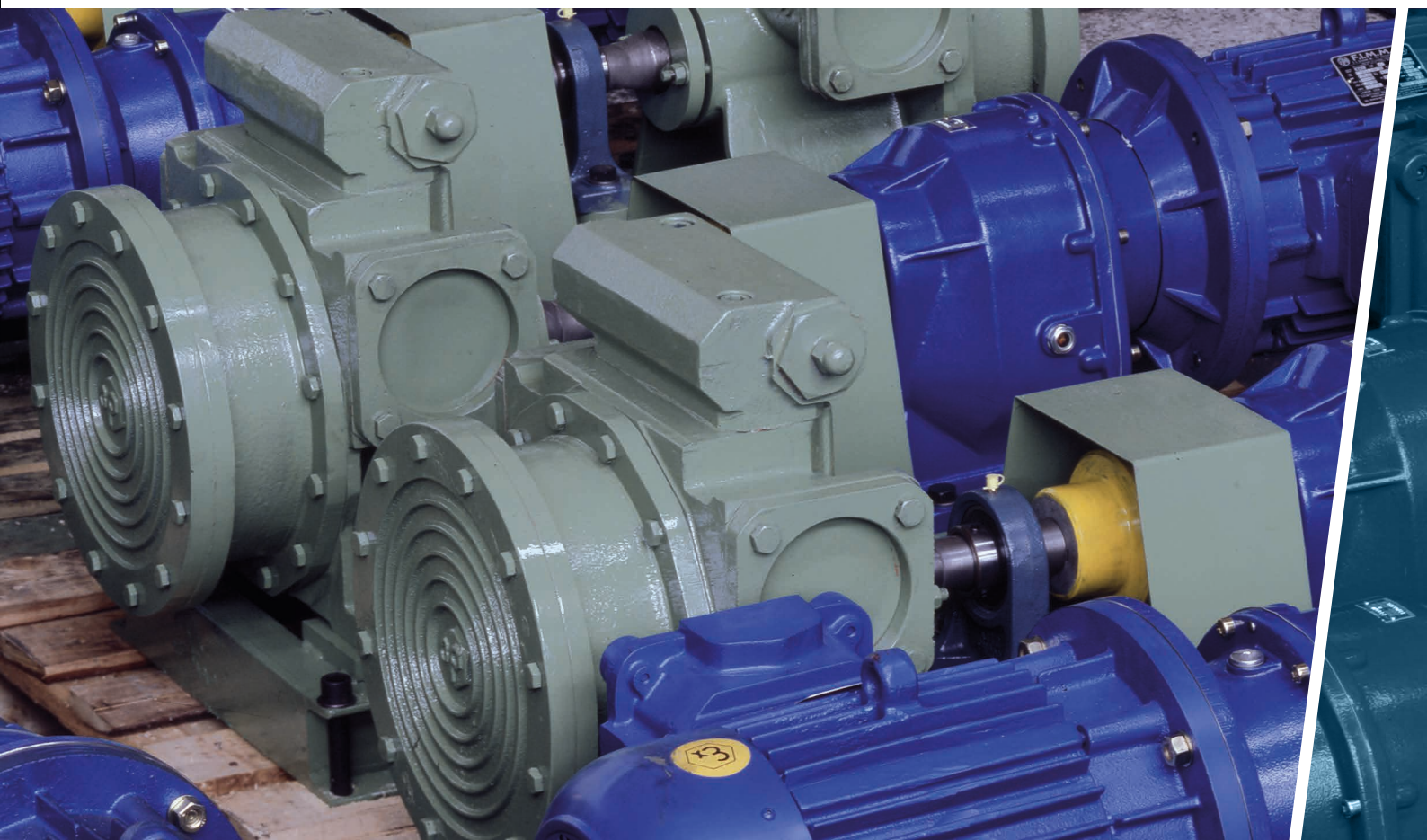
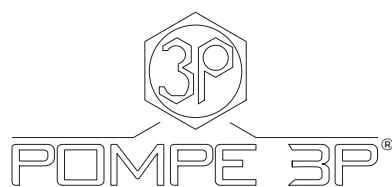
3P Prinz is the owner of the following Brands:

Pompe 3P®

Hollow rotary disk, Centrifugal and Gear Pumps

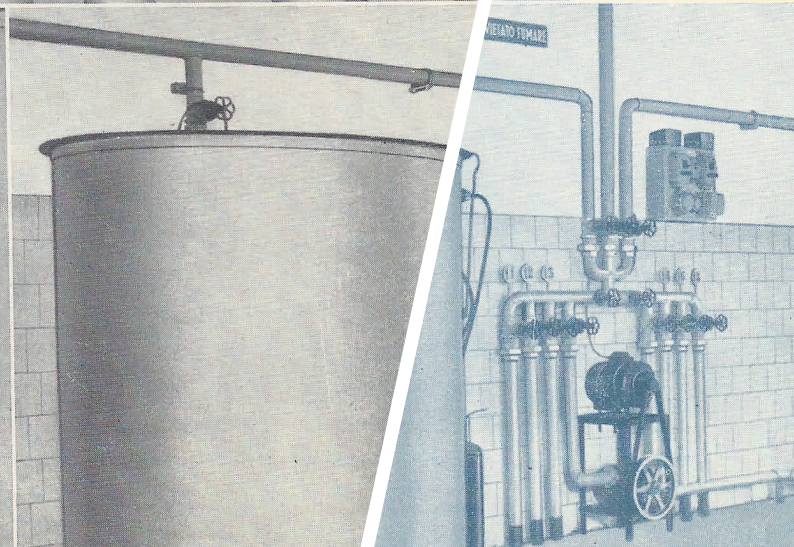
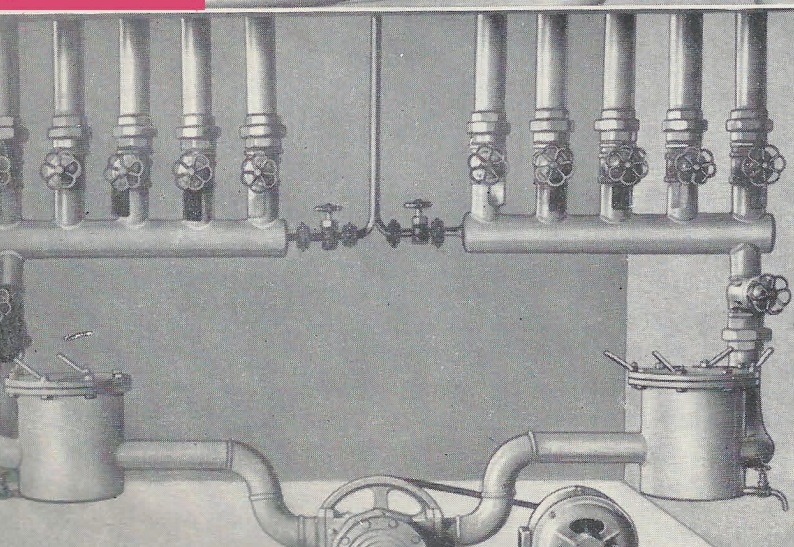
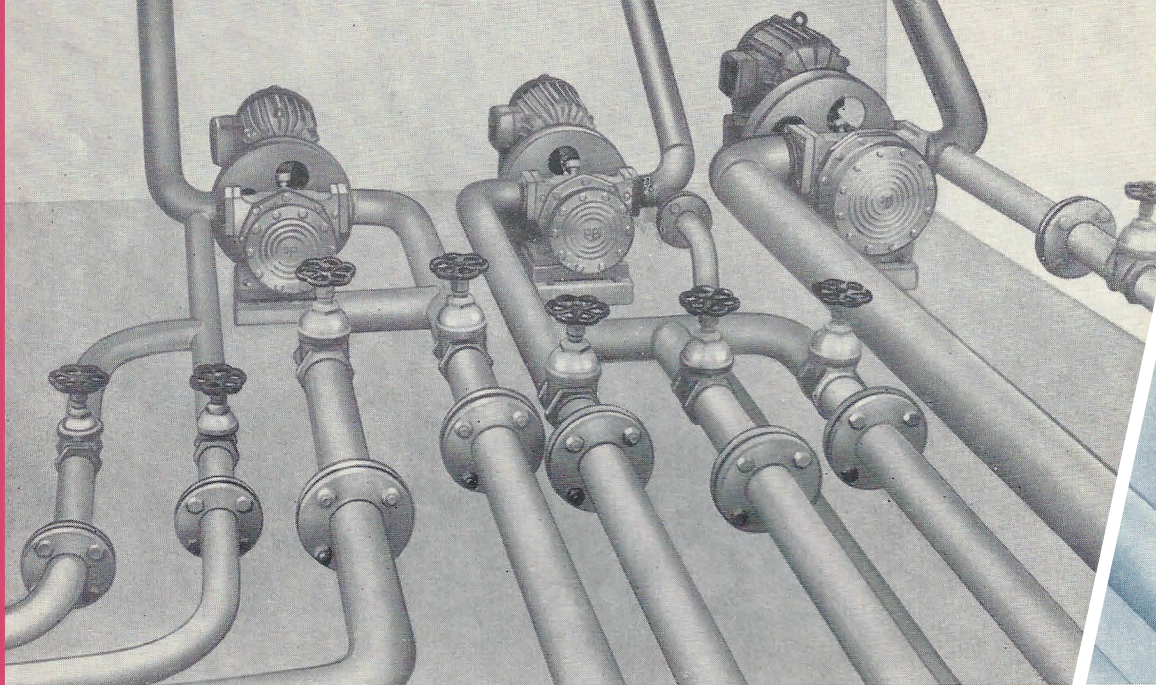
Pera-Prinz®

Screws pumps





OFF. MECC. PERA



## / Our History since 1952

Tracing its history to early 1952, in Lucca Tuscany we can find its first application about hollow disk design with Pompe 3P.

Today 3P Prinz® with its own brands Pompe 3P® and Pera-Prinz® has more that 12000 pumps installed.

The company is highly specialized, engineering products and innovative technology, serving the demands of customers worldwide. 3P Prinz is the owner of the following Brands:

**Pompe 3P®** - Hollow rotary disk, Centrifugal and Gear pumps  
**Pera-Prinz®** - Screws pumps

**Visit site**  
[www.3pprinz.com](http://www.3pprinz.com)

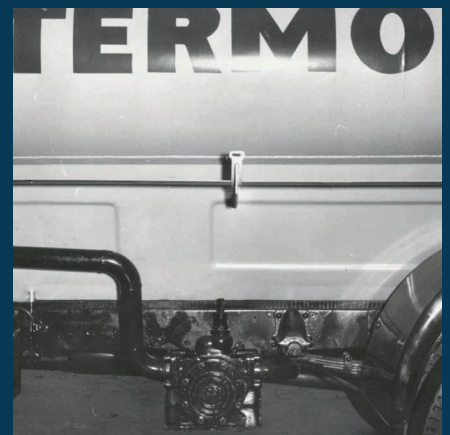
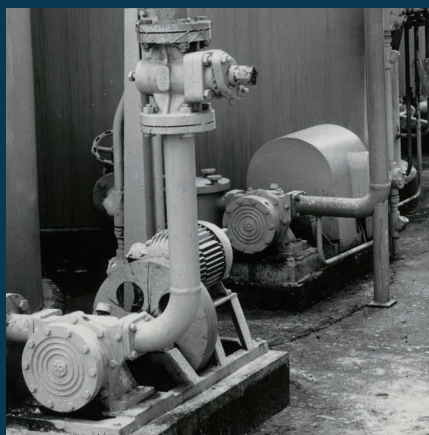
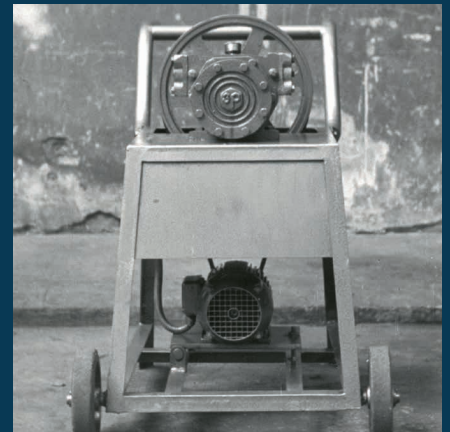
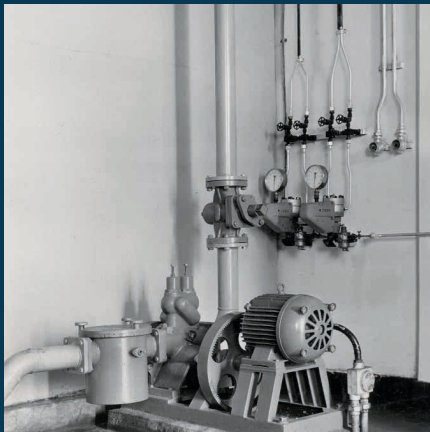




3P Prinz believes that to buy a pump is  
a long term investment and not  
“One-off transaction”

## / More than 50 years of reliability

Our team is made up of skilled technicians who have the right expertise, combined with years of experience. This ensures that our clients are dealt in the best way possible.



### 3PPrinz

With its own brands is placed, as a very important company, in national and international market regarding the production of positive displacement pumps.

### Since

The kinds of engineered and assembled pumps vary between hollow-oscillating disk pumps, screw pumps, gear pumps and other specially designed ones.

### 1952

All of our employers, at any level, are fully experienced along 50 years history. Our company works constantly to reach maximum customer satisfaction.

Within our customer base are some of the most important international companies. Italian, european, asian and african industries working in refinery, petrochemical, olive oil production, as well as chemical, pharmaceutical, marine & shipbuilding and environmental.



## / Our production

3P Prinz avails very advanced research, analysis, design and production, as well as control system, employing materials of outstanding quality. The whole mechanical and assembling cycles and the pump-testing procedures are accomplished in site.

### Design

Our employees have gained, in the course of their cooperation with major businesses, full flexibility and outstanding professional skills, which are available to the customer's needs at any moment.

### Research

The research department within the company operates in order to use the best materials and the most advanced and latest generation technology. The company is able to supply products to specific needs and demands of customers.

### Quality assurance and Production

For each produced pump, a certificate of compliance with European Union Standards is released, along with a user-and-maintenance manual. Upon customer's request, a certificate of internal testing can be released.

### Genuine spare parts

The control, after sales service, and supply of original spare parts are at the basis of 3P Prinz approach with its customers.

**Visit site**

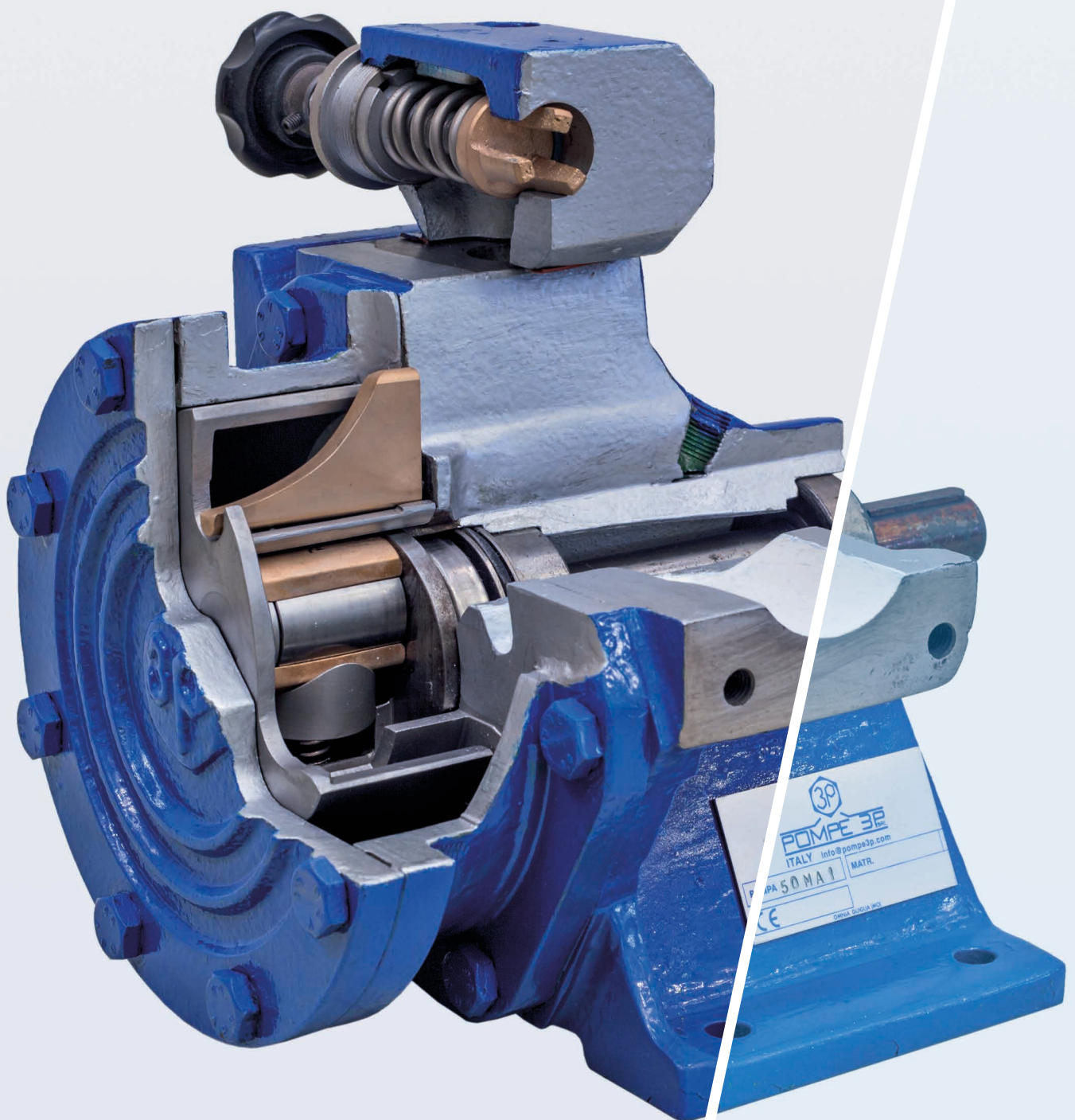
[www.3pprinz.com](http://www.3pprinz.com)





We build pumps that work the way you wish they would.

They are common and well established pumps in the market. Both design are modular with high degree of interchangeability of parts between the pumps and their variants, inside the same products family.





# / Industry served

Thanks to 3P Prinz range of products, today the company can supply specific and taylor made pumps for liquids for the most important industries.

## Oil & Gas

1952 - Today

Oil & Gas industry has a large request of pumps, and this is for 3P Prinz one of the main market. Reliability, efficiency and performance are the base in this industry. In many case the offshore platform are located in remote area, normally they work heavy duty, in very hard conditions 3P Prinz design and build the pumps fully fully in accordance with the customer specification.

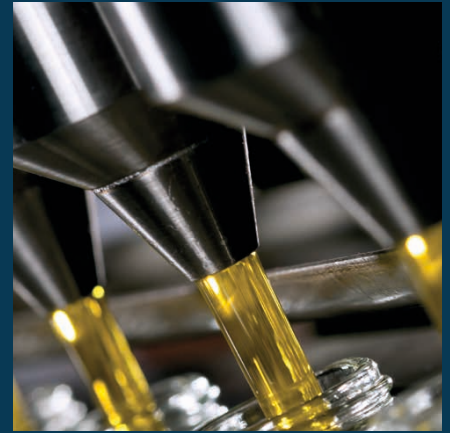
During the project stage, the company take care about not only the fluid, but also of the climate conditions, of the ambient temperature etc. All the different components that are used on the pumps and auxiliary accessories are compatible with the local regulations, ambient temperature and location . 3P Prinz can offer much more economical solutions when the high grad Alloys are require to avoid the corrosion The pumps are available all kind of material from cast iron/carbon steel to high grade alloys, like titanium, hastelloy, duplex stainless steel. 3P Prinz on request can supply pumps fully in accordance with API Specification.

-- @3pprinz





# / Fields of application



## Pulp & Paper

1952 - Today

Due to the process for pulp production, several chemical liquids are used, there is a very high grade corrosion and erosion inside this process. 3P Prinz can supply the right pump, built in the right material in order to have longest live with the minimum maintenance cost.

-- @3pprinz

## Marine&Shipbuilding

1952- Today

Pumps play a major part in marine vessel operations. A variety of liquids, air, vacuum pumps are used on board ships for different operations, but all share the one thing in common – they are very durable!

The ocean water can be very salty and they can cause corrosion of metal. In this case the pumps are manufactured in special material / alloy in order to be very durable not only for the fluid but also for the area around.

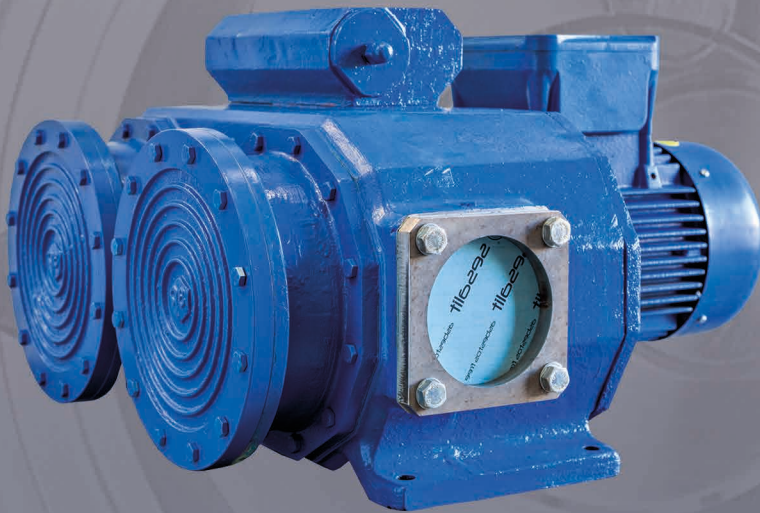
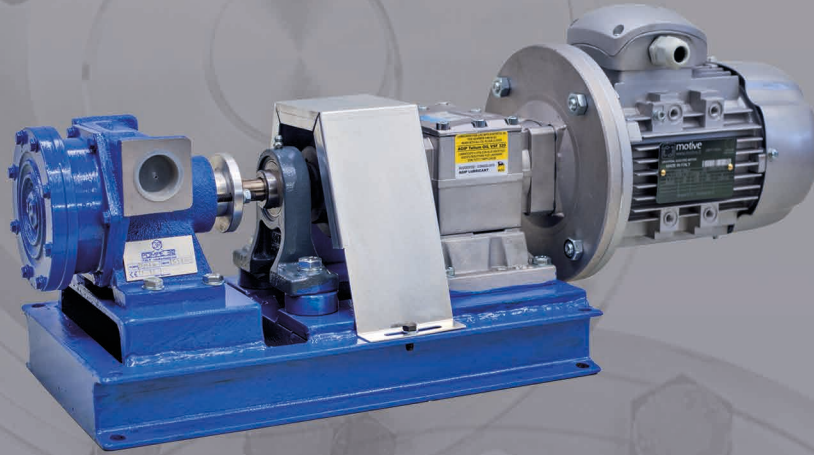
-- @3pprinz

## Food&Beverage

1952- Today

3P Prinz portfolio has many references in vegetable oil and fats, and every type of oil. 3P Prinz offers a range of products for processing, from full viscosity range as well clear, creamy, fruit preparation and particular food.

-- @3pprinz





# / Features

Self Priming without any auxiliary devices

Low operating speed

Reverse flow by operating in reverse rotation and keep constant capacity.

## / Hollow Rotary Disk Pumps Series

This type of pumps with single impeller is ideal to transfer liquid with medium, high and very high viscosity containing also small amounts of suspended solids.

**On request it is possible to have special materials like Duplex, Super Duplex, Stainless Steel or special Alloy as well as special overlay material for wetted parts.**

### SELF PRIMING

Primes without any auxiliary device and with empty suction pipe (suction capacity 9 meters of water column). Only at initial start-up it requires filling the pump with a liquid.

### REVERSIBLE

The pump keeps constant capacity and total head working in both directions.

### DISK'S ELASTICITY

This feature allows recovering possible wear, thermal expansion and consents treating fluids with solid particles in suspension.

### LOW ROTATION SPEED

It is particularly indicated for "delicate" and/or extremely viscous fluids. This feature also assures durable and reliable operation.

### The scope of supply is not limited to the pumps

3P Prinz can supply also:

- Skid type base frames or custom skid mounted
- Instrumentation
- On-skid piping with valves
- Control equipment
- Auxiliary equipment.

### Special Executions and Materials

3P Prinz is able to manufacture the entire range of products with special materials for pump wetted parts.

Starting from cast iron to the all special Alloys, like Inconel®, Hastelloy®, Alloy 20 or Duplex / Super Duplex.

The material selection borrows from the service fluid, the temperature and the external ambient.

Pumps design like is due to the right materials selection.

### Technical Features

ND pipes [mm]	From 25 to 200
Flow rate [m3/h]	From 0 to 200
Max. pressures [bar]	12
Max. temperatures [°C]	280
Rotation speed [RPM]	From 0 to 950
Viscosity [cSt.]	200,000

### Materials

Casing	Trim and Wetted Parts
Cast Iron	Carbon Steel
Stainless Steel	Stainless Steel
Duplex and Super Duplex	Duplex and Super Duplex
Inconel®	Inconel®
Hastelloy™	Hastelloy™
Nickel-Aluminium Bronze	Nickel-Aluminium Bronze
	Monel K
	HVOF Spray Coated
Note : Other Alloys on request	

### Certification

On Products :	Electrical Group :
Standard CE	CE and ATEX standards
On request ATEX and / or API	UL and ATEX standards
	NEMA standard
	Other on request (diesel)
On Components :	
ISO EN 10204-2.1	
ISO EN 10204-2.2	
ISO EN 10204-3.1	
ISO EN 10204-3.2	

### On Request:

- MAG Magnetic Drive  
Total absence of any liquid leakage thanks to the magnetic entrainment.  
Suitable for dangerous and harmful medium

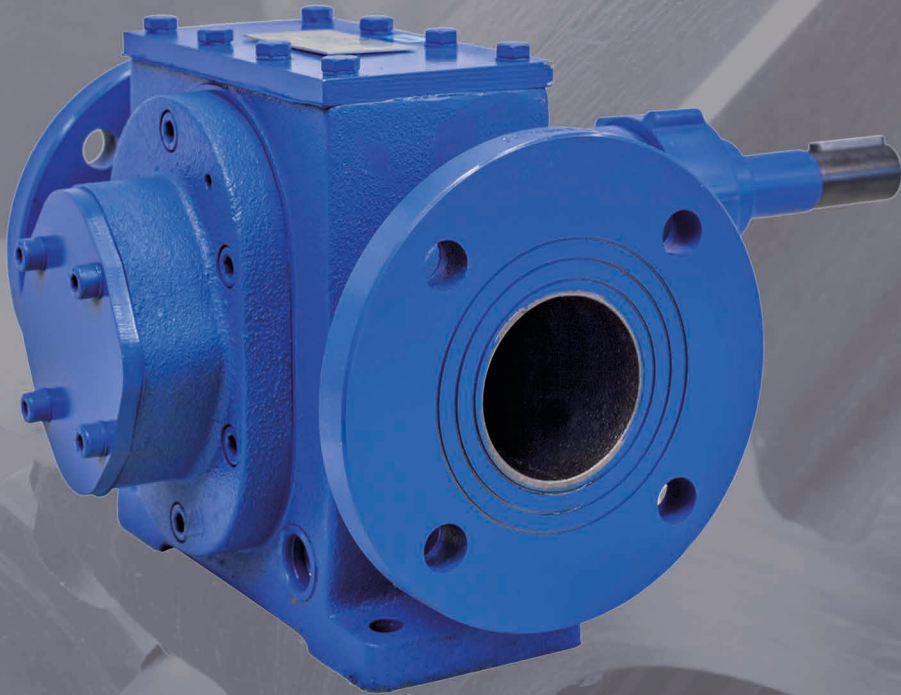
- Accordance with API Standard

- High Pressure Version (20 Barg)

- Custom Made Skid

- Special Execution for Low or High Temperature and / or Ambiente Temperature

  
POMPE 3P®



  
POMPE 3P®



# / Features

Compared to the more traditional positive displacement pumps, this type has the advantage of absolutely no impulses and better delivery repetition.

## / Gear Pumps Series

3P Gear pumps that are rotary displacement pumps, can be considered ideal batching pumps where the flow rate is directly proportional to the number of revolutions.

### DESCRIPTION

The rotation of the gear is possible only if a specific radial and axial clearance, although minimum, exists between the gear and the casing. All these clearances form a passage with a fixed section that allows the pumped fluid to be conveyed from the delivery to the suction side due to the differential pressure existing inside the pump. The backflow amount increases in function of the differential pressure and decreases in function of viscosity. The pump may rotate both clockwise and counterclockwise.

The pump revolves in one direction only if a safety (by-pass) valve with internal re-circulation is installed or due to the specific characteristics of the mechanical seal.

### The scope of supply is not limited to the pumps

#### 3P Prinz can supply also:

- Skid type base frames or custom skid mounted
- Instrumentation
- On-skid piping with valves
- Control equipment
- Auxiliary equipment.

### Special Executions and Materials

3P Prinz is able to manufacture the entire range of products with special materials for pump wetted parts.

Starting from cast iron to the all special Alloys, like Inconel®, Hastelloy®, Alloy 20 or Duplex / Super Duplex.

The material selection borrows from the service fluid, the temperature and the external ambient.

Pumps design like is due to the right materials selection.

#### On Request:

- MAG Magnetic Drive  
Total absence of any liquid leakage thanks to the magnetic entrainment.  
Suitable for dangerous and harmful medium

- Custom Made Skid

- Special Execution for Low or High Temperature and / or Ambiente Temperature

#### Technical Features

ND pipes [mm]	From 3/8" to 250
Flow rate [m3/h]	From 0 to 300
Max. pressures [bar]	30
Max. temperatures [°C]	200
Rotation speed [RPM]	From 0 to 1750
Viscosity [cSt.]	500,000

#### Materials

Casing	Trim and Wetted Parts
Cast Iron	Carbon Steel
Stainless Steel	Stainless Steel

#### Certification

On Products :	Electrical Group :
Standard CE	CE and ATEX standards
On request ATEX and / or API	UL and ATEX standards
	NEMA standard
	Other on request (diesel)
On Components :	
ISO EN 10204-2.1	
ISO EN 10204-2.2	
ISO EN 10204-3.1	
ISO EN 10204-3.2	



PERA-PRINZ®



PERA-PRINZ®



# / Features

PERA-PRINZ® screws pumps are externally supported positive displacement rotary pumps.

## / Screws Pumps Series

One or two pairs of screws which turns without touching each other, ensure constant pulsation, free capacity together with an elevated suction capacity, ie, a very low NPSH rate.

**On request it is possible to have special materials like Duplex, Super Duplex, Stainless Steel or special Alloy as well as special overlay material for wetted parts.**

### CONSTRUCTION

- Integral or inserted screws
- External support with rolling bearings which are constantly lubricated
- Transmission of movement between the pairs of screws by means of oil bath gears which ensure quiet and long-life working
- Mechanical seal (single or double) or stuffing box type with the possibility of heating or cooling same
- Pump body with heating cooling compartment on request
- Integral or pressed-in liner pump casing
- Pumps can be built with horizontal or vertical performance

**The scope of supply is not limited to the pumps**  
**3P Prinz can supply also:**

- Skid type base frames or custom skid mounted
- Instrumentation
- On-skid piping with valves
- Control equipment
- Auxiliary equipment.

### Special Executions and Materials

3P Prinz is able to manufacture the entire range of products with special materials for pump wetted parts.  
Starting from cast iron to the all special Alloys, like Inconel®, Hastelloy®, Alloy 20 or Duplex / Super Duplex.  
The material selection borns from the service fluid, the temperature and the external ambient.  
Pumps design like is due to the right materials selection.

On Request:
- Accordance to API 676 Standard
- Instrumentation
- Skid Type Base frames or Custom Skid Mounted
- On Skid Piping with Valves
- Control Equipment
- Auxiliary Equipment
- Special Execution for Low or High Temperature and / or Ambiente Temperature

Technical Features	
ND pipes [mm]	From 40 to 600
Flow rate [m3/h]	From 0 to 1700
Max. pressures [bar]	30
Max.temperatures [°C]	180
Rotation speed [RPM]	From 0 to 950
Viscosity [cSt.]	35,000

Materials	
Casing	Trim and Wetted Parts
Cast Iron	Carbon Steel
Stainless Steel	Stainless Steel
Duplex and Super Duplex	Duplex and Super Duplex
Inconel®	Inconel®
Hastelloy™	Hastelloy™
Nickel-Aluminium Bronze	Nickel-Aluminium Bronze
	Monel K
Nickel-Aluminium Bronze	HVOF Spray Coated
Note : Other Alloys on request	

Certification	
On Products :	Electrical Group :
Standard CE	CE and ATEX standards
On request ATEX and / or API 676	UL and ATEX standards
	NEMA standard
On Components :	Other on request (diesel)
ISO EN 10204-2.1	
ISO EN 10204-2.2	
ISO EN 10204-3.1	
ISO EN 10204-3.2	

Reliability  
Efficiency  
Performance

Since 1952









**/ 3PPrinz®**

Made in Tuscany, Italy

[sales@3pprinz.com](mailto:sales@3pprinz.com)  
[www.3pprinz.com](http://www.3pprinz.com)

Pompe 3P® and Pera-Prinz® are trademarks of 3P Prinz® srl

