
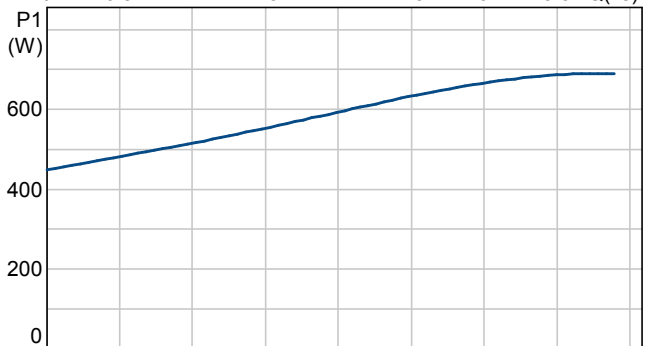
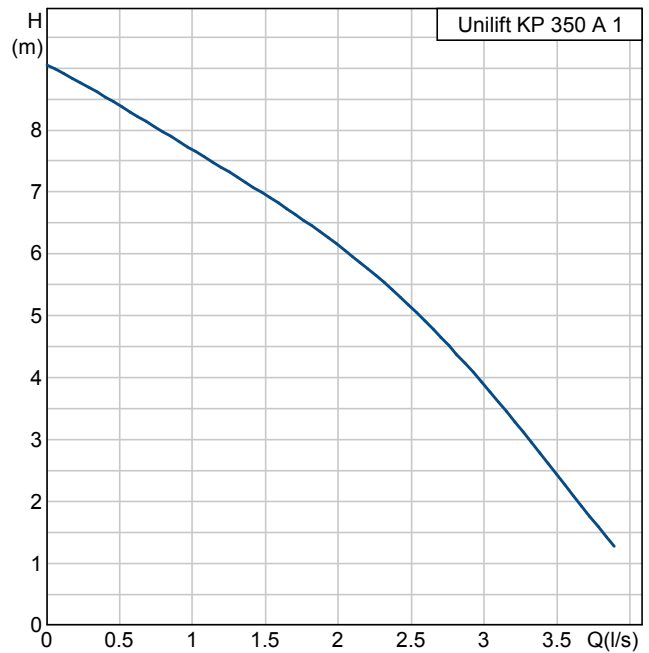


Position	Qty.	Description	Single Price
	1	<p data-bbox="292 159 496 188"><b>Unilift KP 350 A 1</b></p>  <p data-bbox="676 499 1214 528"><b>Note! Product picture may differ from actual product</b></p> <p data-bbox="292 555 600 611">Product No.: 013N4700 Submersible drainage pump</p> <p data-bbox="292 638 815 777">Vertical single-stage stainless steel submersible pump with vertical discharge port and integrated submersible 1-phase canned motor in insulation class F with thermal overload protection.</p> <p data-bbox="292 804 804 916">The pump is fitted with suction strainer and a carrying handle and is supplied with a 5 m mains cable and float switch for automatic start and stop.</p> <p data-bbox="292 943 810 1025">The impeller is a semi-open impeller for 10 mm free passage suitable for pumping groundwater, surface water, rain water and similar liquids.</p> <p data-bbox="292 1052 807 1108">The pump has a double shaft seal consisting of two lip seals with grease in-between.</p> <p data-bbox="292 1135 850 1247">The pump has an outer casing ensuring continuous cooling of the motor by the pumped liquid. The rotor shaft operates in two maintenance-free carbon bearings cooled by the pumped liquid.</p> <p data-bbox="292 1274 802 1303">The motor is filled with a non-toxic motor liquid.</p> <p data-bbox="292 1330 376 1359"><b>Liquid:</b></p> <p data-bbox="292 1359 761 1388">Liquid temperature range: 0 .. 50 °C</p> <p data-bbox="292 1415 416 1444"><b>Technical:</b></p> <p data-bbox="292 1444 734 1473">Maximum particle size: 10 mm</p> <p data-bbox="292 1473 860 1503">Curve tolerance: ISO 9906 Annex A</p> <p data-bbox="292 1529 408 1559"><b>Materials:</b></p> <p data-bbox="292 1559 860 1641">Material, pump housing: Stainless steel 1.4301 DIN W.-Nr. 304 AISI</p> <p data-bbox="292 1641 860 1724">Material, impeller: Stainless steel 1.4031 DIN W.-Nr. 304 AISI</p> <p data-bbox="292 1751 432 1780"><b>Installation:</b></p> <p data-bbox="292 1780 751 1809">Size, pump outlet: Rp 1 1/4</p> <p data-bbox="292 1809 713 1839">Maximum installation depth: 10 m</p> <p data-bbox="292 1865 469 1895"><b>Electrical data:</b></p> <p data-bbox="292 1895 730 1924">Power input (P1): 700 W</p> <p data-bbox="292 1924 730 1953">Mains frequency: 50 Hz</p> <p data-bbox="292 1953 810 1982">Rated voltage: 1 x 220-240 V</p> <p data-bbox="292 1982 718 2011">Rated current: 3.2 A</p> <p data-bbox="292 2011 778 2040">Capacitor size - run: 8 µF/400 V</p> <p data-bbox="292 2040 708 2069">Enclosure class (IEC 34-5): IP68</p> <p data-bbox="292 2069 671 2098">Insulation class (IEC 85): F</p>	Price on request

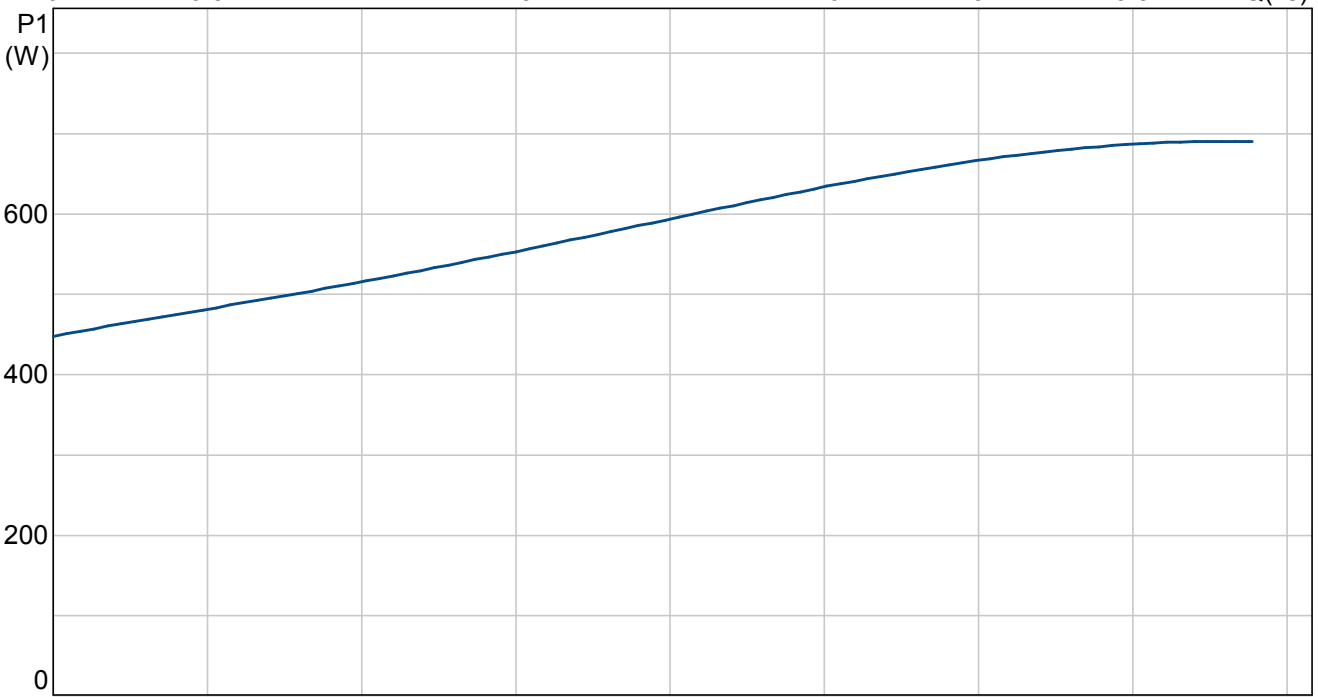
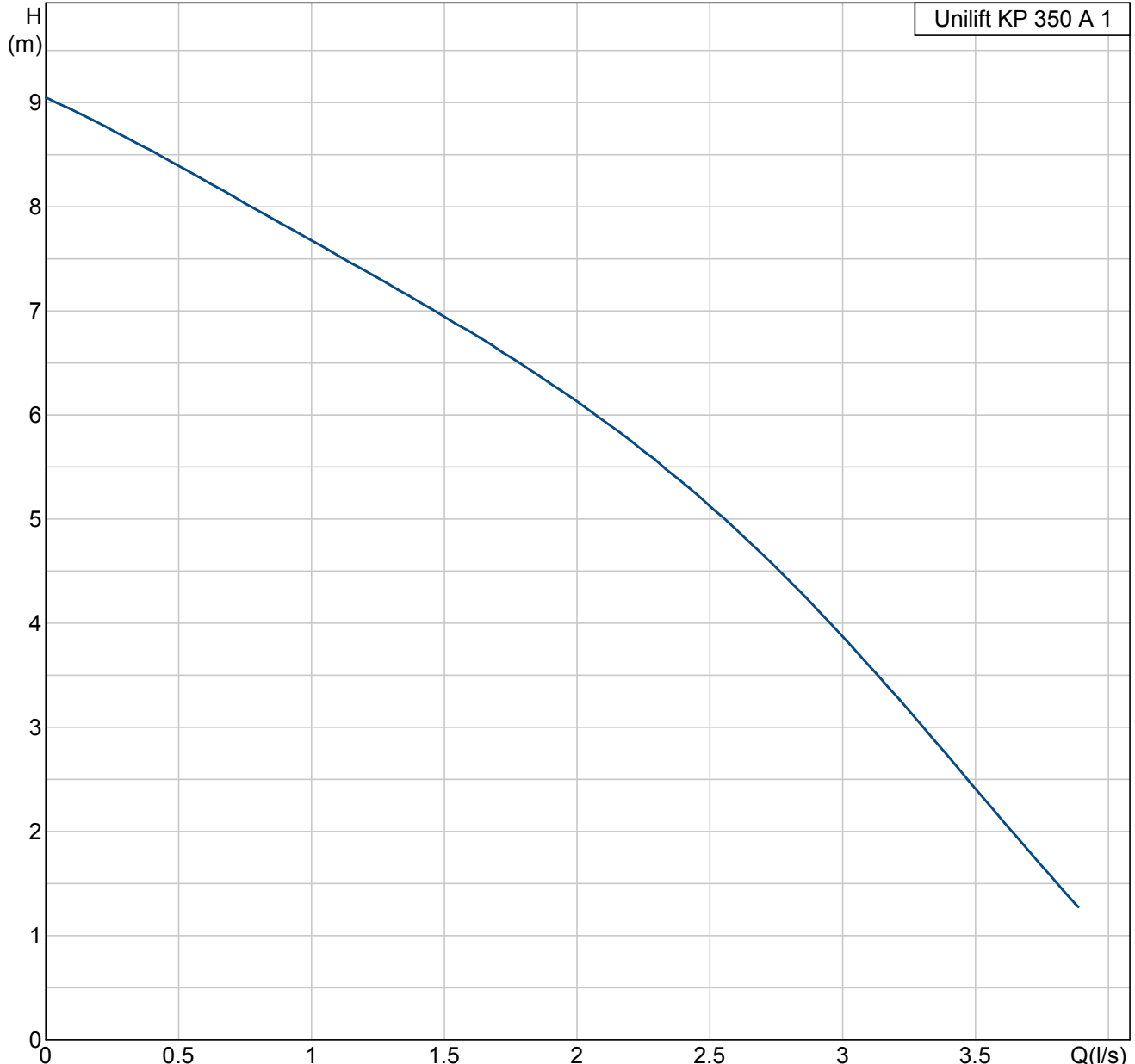
Position	Qty.	Description	Single Price
		Length of cable: 5 m Type of cable plug: AU  <b>Others:</b> Net weight: 8 kg Gross weight: 7.6 kg Shipping volume: 0.013 m <sup>3</sup>	

Description	Value
Product name:	Unilift KP 350 A 1
Product No:	013N4700
EAN number:	5700393449404
<b>Technical:</b>	
Max flow:	14 m <sup>3</sup> /h
Head max:	9 m
Maximum particle size:	10 mm
Curve tolerance:	ISO 9906 Annex A
Model:	A
<b>Materials:</b>	
Material, pump housing:	Stainless steel 1.4301 DIN W.-Nr. 304 AISI
Material, impeller:	Stainless steel 1.4031 DIN W.-Nr. 304 AISI
<b>Installation:</b>	
Size, pump outlet:	Rp 1 1/4
Maximum installation depth:	10 m
<b>Liquid:</b>	
Liquid temperature range:	0 .. 50 °C
<b>Electrical data:</b>	
Power input (P1):	700 W
Mains frequency:	50 Hz
Rated voltage:	1 x 220-240 V
Rated current:	3.2 A
Capacitor size - run:	8 µF/400 V
Enclosure class (IEC 34-5):	IP68
Insulation class (IEC 85):	F
Motor protec:	CONTACT
Thermal protec:	internal
Length of cable:	5 m
Type of cable plug:	AU
<b>Controls:</b>	
Level switch:	float switch A
<b>Others:</b>	
Net weight:	8 kg
Gross weight:	7.6 kg
Shipping volume:	0.013 m <sup>3</sup>



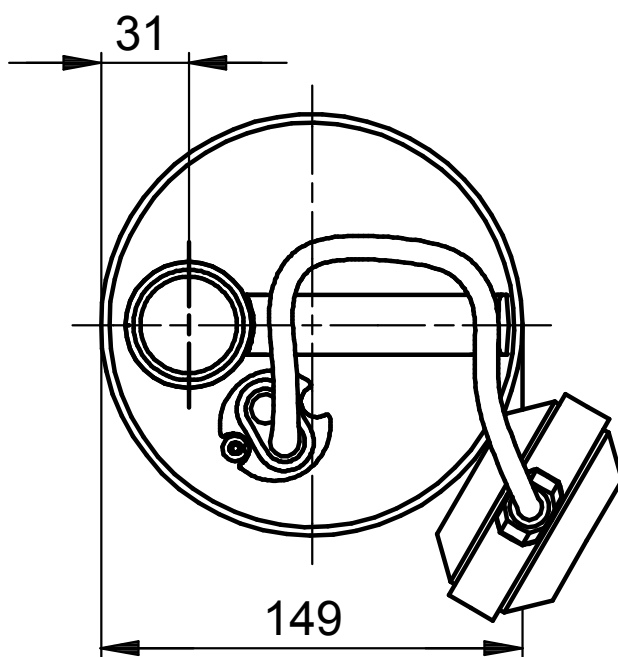
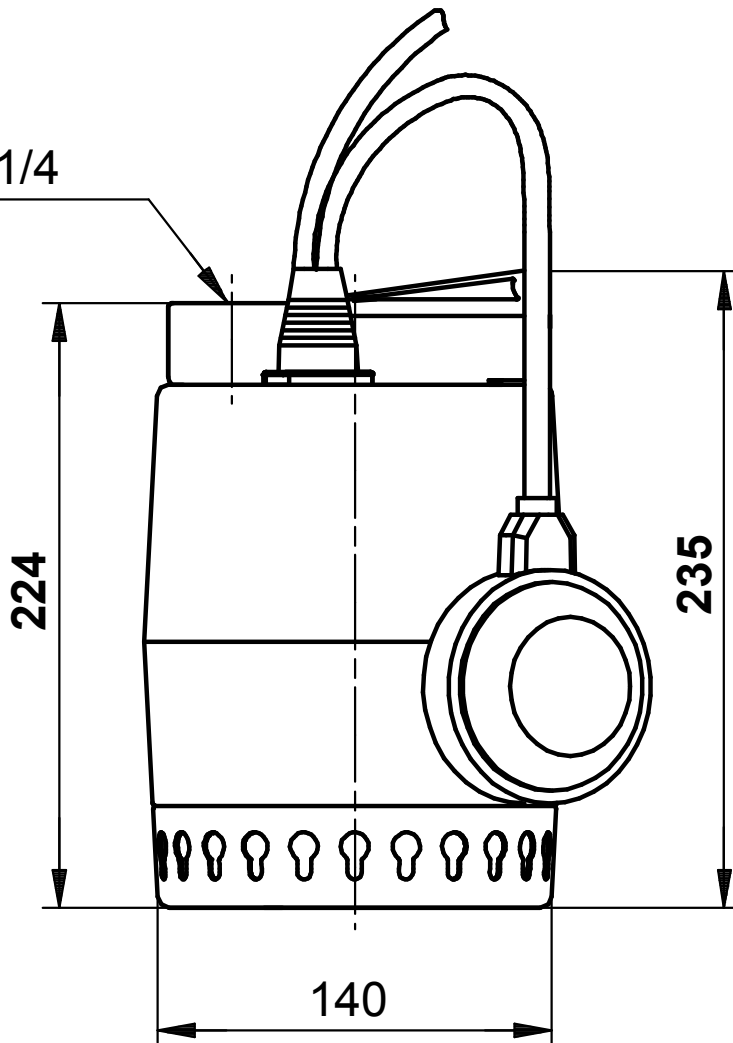
013N4700 Unilift KP 350 A 1

Unilift KP 350 A 1



013N4700 Unilift KP 350 A 1

RP 1 1/4



Note! All units are in [mm] unless others are stated.