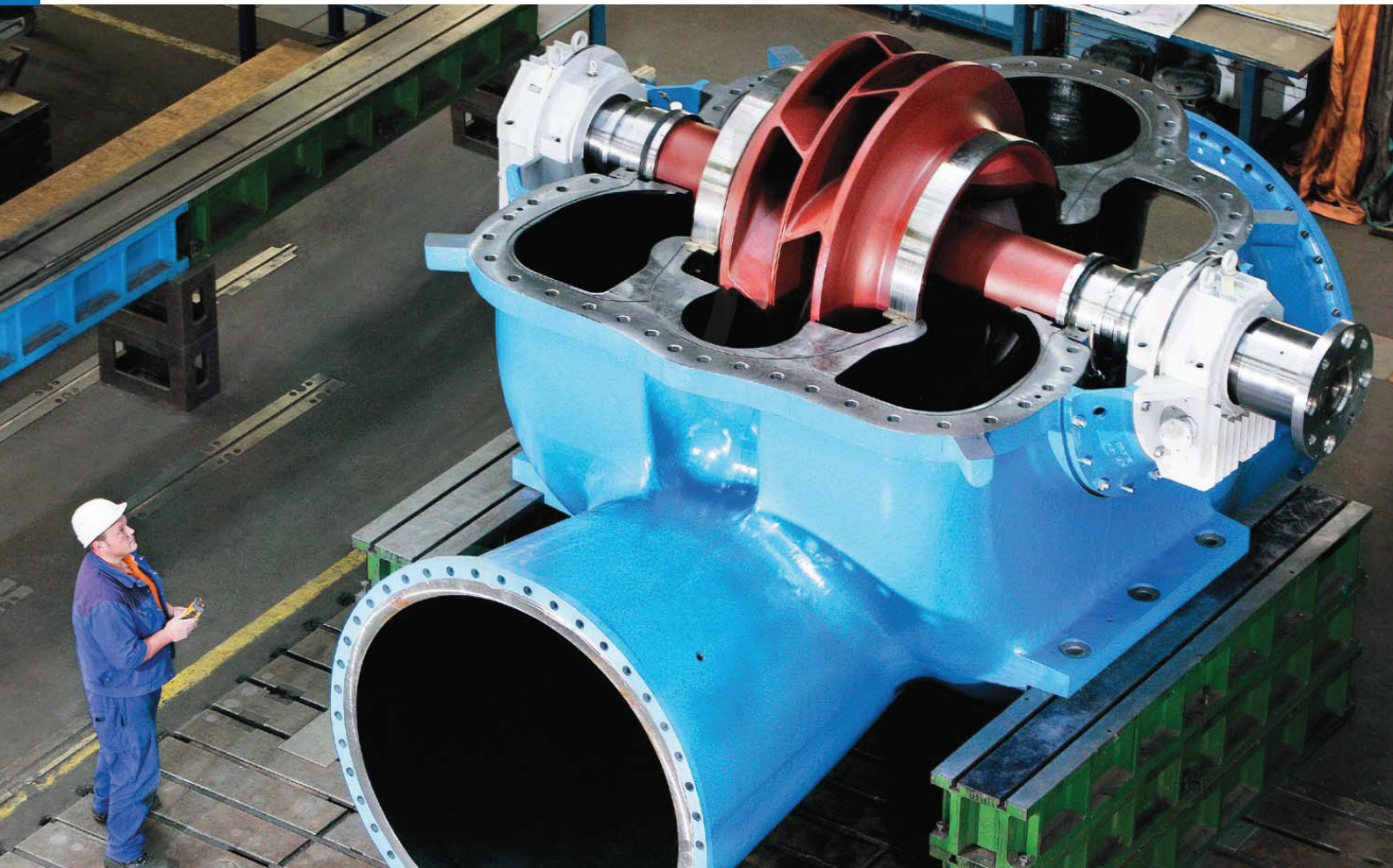


# **ANDRITZ Double Suction Split Case Pumps**

For water supply to Beijing



# One of the world's largest horizontal double suction split case pumps

Pumping systems from ANDRITZ contribute essentially to safe water supply. Beijing, the mega-city, also relies on technology and quality from ANDRITZ.

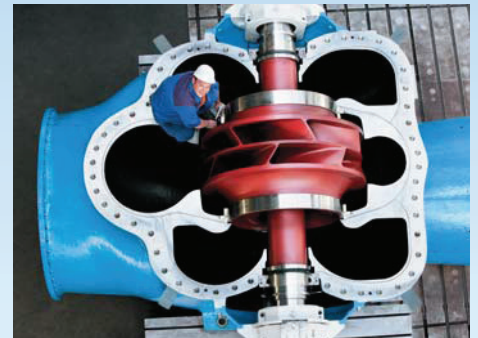
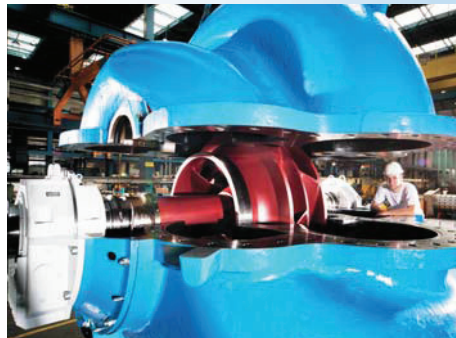
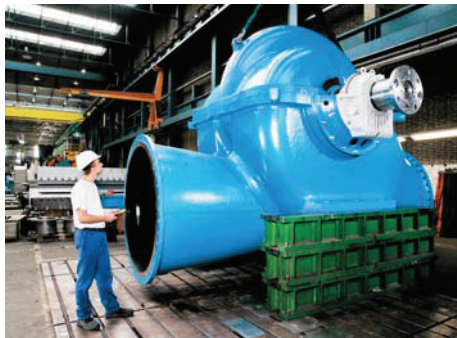
Hui Nan Zuang pumping station located in the south-west of Beijing is equipped with ANDRITZ Horizontal Double Suction Split Case Pumps.

Three pumps plus one spare pump per unit deliver water into a joint pipe, measuring 4 m in diameter.

Hui Nan Zhuang is the only pumping station at the central water supply channel for the "South-to-North Water Diversion" scheme, a "once-in-a-lifetime" project. The channel is approximately 1,200 km long.

The ANDRITZ-supplied pumps convey a total of 60 m<sup>3</sup> of water per second over a distance of approximately 60 km into the Chinese capital.

The pumps for Beijing water supply belong to the world's largest of their type. Manufacture and assembly were carried out in Graz, Austria.



FP 60-1800 Series			
Technical Data		Weight	
Flow rate	10 m <sup>3</sup> /s	Lower part of casing	approx. 35.7 t
Head	59.2 m	Upper part of casing	approx. 13.4 t
Speed	adjustable between 236 and 375 rpm	Total	approx. 63.0 t
Motor power	7300 kW		
Dimensions		Material	
Impeller diameter	1750 mm	Casing	steel casting
Inlet diameter	2000 mm	Impeller	stainless steel
Outlet diameter	1800 mm	Impeller shaft	tempered steel
Length/height/width (casing)	5450/4500/3200 mm		

## ANDRITZ AG

Stattegger Strasse 18  
8045 Graz, Austria  
Phone: +43.316.6902-2133  
guenter.haiden@andritz.com

[www.andritz.com](http://www.andritz.com)